

Release Notes for the QNX Neutrino 6.4.0 BSP for Atmel AT91SAM9261-EK Board#

System requirements#

Target system#

- QNX Neutrino RTOS 6.4.0
- Board: Atmel at91sam9261-EK Evaluation Board
- Data-Flash: AT45DCB008D (8 MB) CARD
- SDRAM: 16-bit Micron MT48LC16M16A2 (64 MB) SDRAM
- NAND Flash: Samsung K9F2G08U0A (256 MB) NAND Flash

Host development system#

- QNX Momentics 6.4.0, one of the following host systems:
 - QNX Neutrino 6.4.0
 - Microsoft Windows Vista, XP SP2 or SP3, 2000 SP4
 - Linux Red Hat 8 or 9, Linux Red Hat Enterprise Workstation 3 or 4, Red Hat Fedora Core 3 or 4, or SUSE 10
- Terminal emulation program (Qtalk, Momentics IDE Terminal, tip, HyperTerminal, etc.)
- Windows Machine required SAM-BA application to download the image on Data-Flash.
- RS-232 serial port
- NULL-modem serial cable
- USB cable to connect board with windows Machine

Getting Started#

Step 1: Connect your hardware#

Connect the DEBUG port of the AT91SAM9261 board to the first serial port of your windows machine. Install the SAM-BA application provided by Atmel. Connect the board with Windows Machine using USB Cable.

Step 2: Build the BSP#

You can build an OS image from the source code or the binary components contained in a BSP package. For instructions about building an OS image, please refer to the chapter Working with a BSP in the Building Embedded Systems manual. After Building the BSP three bin files will be created in images directory.

*ifs-at91sam9261.bin

*ipl-at91sam9261.bin

*ipl-ifs-at91sam9261.bin

mkflashimage script creates a combined IPL/IFS image as ipl-ifs-at91sam9261.bin

The mkflashimage script:

```
#!/bin/sh
```

```
# script to build a binary IPL and boot image for ATMEL AT91SAM9261 Evaluation Kit board.
```

```
# NOTE the image (ipl-ifs-at91sam9261.bin) must be built as binary, i.e. [virtual=armle,binary] in the buildfile
```

```
set -v
```

```
# Convert IPL into BINARY format
```

```
${QNX_HOST}/usr/bin/ntoarm-objcopy --input-format=elf32-littlearm --output-format=binary -R.data ../install/armle/boot/sys/
```

```
# Pad BINARY IPL
mkrec -s16k -ffull -r ipl-tmp-at91sam9261.bin > ipl-at91sam9261.bin

# Combine the BINARY IPL with the BINARY OS Image
cat ./ipl-at91sam9261.bin ./ifs-at91sam9261.bin > ipl-ifs-at91sam9261.bin

# Cleaning up temporary files
rm -f *tmp*
```

Step 3A: Download the Bootable IFS image.#

The Boot Program integrates different programs that manage download and/or upload into the different memories of the product. First, it initializes the Debug Unit serial port (DBGU) and the USB High Speed Device Port.

- Then NAND Flash Boot program is executed. The NAND Flash Boot program searches for a valid application in the NAND Flash memory. If a valid application is found, this application is loaded into internal SRAM and executed by branching at address 0x0000_0000 after remap.
- If no NAND Flash Boot program is found, the Data-Flash Boot program is then executed. It looks for a sequence of seven valid ARM exception vectors in a Data-Flash connected to the SPI. All these vectors must be B-branch or LDR load register instructions except for the sixth vector. This vector is used to store the size of the image to download. If a valid sequence is found, code is downloaded into the internal SRAM. This is followed by a remap and a jump to the first address of the SRAM. If no valid ARM vector sequence is found, SAM-BA Boot is then executed. It waits for transactions either on the USB device, or on the DBGU serial port.

Install and setup SAM-BA#

1. Install "AT91-ISP v1.12.exe" .
2. Install "ActiveTcl8.5.5.0.287690-win32-ix86-threaded.exe" i.e. TCL environment which is used by SAM-BA (any other TCL environment can also be used) .
3. Connect serial cable with windows machine, and use any serial port application such as teraterm or hyperterminal, and attach it with COM device, with baud rate set as 115200. Remove jumper J21 .
4. Restart the board, hyperterminal will be showing following message .

```
RomBOOT
>
```

5. Connect usb cable with windows machine, It will prompt with a new usb hardware found message, and will try to install the corresponding driver .
6. Check device has enumerated properly by looking into device manager. Enable jumper J21 .
7. Start SAM-BA 2.6 with \usb\ARM0 as connection.

Loading the IFS image using SAM-BA#

- Select the Data-Flash AT45DB/DCB tab in SAM-BA Application. Execute the Enable Data-flash on CS0 script.
- Select the ipl-ifs-at91sam9261.bin file to be sent to the target, and then press Send File. Depending on the size of your file, it will take a few seconds up to a minute.

SAM-BA 2.6 - AT91SAM9261-EK

File Script File Link Help

AT91SAM9261 Memory Display

Start Address: Refresh


Size in byte(s): Display format


ascii
 8-bit
 16-bit
 32-bit

0x00300000	0xB3D61E04	0xA748CB7A	0xEF4097F7	0x677FCA6B
0x00300010	0xE30F2335	0xB5FEFDDE	0x336F37BF	0xB71CD73E
0x00300020	0xBEF69A47	0xD63694E0	0xC1D4A61F	0xDC2DD7AE
0x00300030	0x756AFF8E	0x159E11E6	0x10DBEFB6	0xCF9F3F7F
0x00300040	0x959B69FD	0xF34DF2EE	0xD9EC571F	0x3665DCDE
0x00300050	0x5A7CEEED	0x7DB9BAFF	0xF7ABE566	0xE736FC72
0x00300060	0xD57EB3EB	0xE1FC419B	0xD0D362F3	0xB7DD5FA6
0x00300070	0x59752BA3	0xAEB7E57F	0xDDEFD5EB	0x9D3195E6

DataFlash AT45DB/DCB | **NandFlash** | SDRAM | SRAM

Download / Upload File

Send File Name: 

Receive File Name: 

Address: Size (For Receive File): byte(s)

Scripts

```

-I- Switch to the correct PCS of SPI0 Mode Register (Fixed Peripheral Selected)
-I- Chip Select 0 Selected
-I- Enable the SPI0
-I- Wait for dataflash ready (bit7 of the status register)
-I- DataFlash AT45DB642
-I- End of Select DataFlash
(AT91-ISP v1.10) 26 % send_file {DataFlash AT45DB/DCB} "Y:/package/download_pckg/9261/images/ipl-ifs-at91sam9261.bin" 0x0
-I- Send File Y:/package/download_pckg/9261/images/ipl-ifs-at91sam9261.bin at address 0x0
-I- File size = 6548012 byte(s)
(AT91-ISP v1.10) 26 %
  
```

Now on your terminal you will see output as follows:

RomBOOT

>

QNX Neutrino Initial Program Loader for ATMEL AT91SAM9261-EK
 Commands:

Press 'D' for serial download, using the 'sendnto' utility
 Press 'F' to Boot an OS image from SPI/SERIAL flash
 ATMEL AT45DB642D/AT45DCB008D SPI Flash detected.

QNX IFS image detected on page: 00000010 Offset: 00000220 Size: 0063AA2C
 #####Done
 found image, calling image setup...

image_setup OK, calling image start...

PIO init : DBGU, TWI (I2C), SPI, NAND, LCD, SD/MMC.

CPU0: Dcache: 512x32 WB

CPU0: Icache: 512x32

CPU0: 41069265: arm926 rev 5 100MHz

elf_map: 1M va=fe000000 pa=21000000 sz=00100000

elf_map: 1M va=fe000000 pa=21000000 sz=00100000

Header size=0x0000009c, Total Size=0x00000508, #Cpu=1, Type=4

Section:system_private offset:0x000001f0 size:0x00000068

 syspage ptr user:fc404000 kernel:fc404000

 cpupage ptr user:fc404808 kernel:fc404808 spacing:84

 kdebug info:00000000 callback:00000000

 boot pgms: idx=0

 0) base paddr:21010000 start addr:fe03d838

 ramsize:00000000 pagesize:00001000

Section:qtime offset:0x00000148 size:0x00000060

 boot:00000000 CPS:0000000002faf08 rate/scale:320000000/-15 intr:1

Section:callout offset:0x000000a0 size:0x00000048

 reboot:fc404680 power:fc4046a0

 timer_load:fc4046b4 reload:fc4046dc value:fc404708

 0) display:fc404728 poll:fc40474c break:fc404770

 1) display:00000000 poll:00000000 break:00000000

Section:cpuinfo offset:0x000001a8 size:0x00000020

 0) cpu:41069265 flags:40000000 speed:00000064 cache i/d:1/0 name:53

Section:cacheattr offset:0x000004c8 size:0x00000040

 0) flags:32 size:0020 #lines:0200 control:fc404508 next:255

 1) flags:11 size:0020 #lines:0200 control:fc40455c next:255

Section:meminfo offset:0x00000508 size:0x00000000

Section:asinfo offset:0x00000328 size:0x00000160

 0000) 0000000000000000-00000000ffffff o:ffff a:0010 p:100 c:00000000 n:21

 0020) 0000000020000000-0000000023ffffff o:0000 a:0017 p:100 c:00000000 n:28

 0040) 0000000000000000-00000000ffffff o:ffff a:0010 p:100 c:00000000 n:21

 0060) 0000000020000000-0000000023ffffff o:0040 a:0007 p:100 c:00000000 n:32

 0080) 000000002100e108-000000002163aa2b o:0000 a:0005 p:100 c:00000000 n:60

 00a0) 0000000021000000-000000002100e107 o:0000 a:0007 p:100 c:00000000 n:68

 00c0) 000000002100e108-000000002163aa2b o:0000 a:0007 p:100 c:00000000 n:76

 00e0) 0000000020000000-0000000020007fff o:0020 a:0007 p:100 c:00000000 n:84

 0100) 000000002001085c-0000000020ffffff o:0020 a:0007 p:100 c:00000000 n:84

 0120) 000000002163aa2c-0000000023dfffff o:0020 a:0007 p:100 c:00000000 n:84

 0140) 0000000023fd0000-0000000023ffffff o:0020 a:0007 p:100 c:00000000 n:84

Section:hwinfo offset:0x000002e0 size:0x00000048

 0) size:3 tag:3 isize:3, iname:0, owner:65535, kids:1

 12) size:3 tag:17 isize:3, iname:9, owner:0, kids:1

 24) size:3 tag:3 isize:3, iname:37, owner:12, kids:1

 36) size:4 tag:46 isize:4, iname:41, owner:24, kids:0

 00 00 00 00

Section:typed_strings offset:0x00000258 size:0x00000028

 off:0 type:5 string:'AT91SAM9261'

 off:16 type:2 string:'localhost'

Section:strings offset:0x00000280 size:0x00000060

 [0]'hw' [3]'Group' [9]'unknown' [17]'Bus' [21]'memory' [28]'ram' [32]'1to1'

 [37]'rtc' [41]'NONE' [46]'Device' [53]'arm926' [60]'imagefs' [68]'startup'

 [76]'bootram' [84]'sysram'

Section:intrinfo offset:0x00000488 size:0x00000040

 0) vector_base:00000000, #vectors:32, cascade_vector:7ffffff

 cpu_intr_base:00000000, cpu_intr_stride:0, flags:0000

 id => flags:8000, size:002c, rtn:fc4045c8

```

eoi => flags:9000, size:0028, rtn:fc4045f4
mask:fc40461c, unmask:fc404640, config:00000000
Section:smp offset:0x00000508 size:0x00000000
Section:pminfo offset:0x00000508 size:0x00000000
Section:mdriver offset:0x00000508 size:0x00000000
Section:boxinfo offset:0x000001c8 size:0x00000028
hw_flags:00000000
Section:cpu offset:0x00000128 size:0x00000020
page_flush:fc40458c page_flush_deferred:fc4045c4
upte_ro:00000aae upte_rw:00000ffe
kpte_ro:0000000e kpte_rw:0000055e
mask_nc:0000000c
mmu_cr1:00051078 set:0000317f clr:00000000 -> 0005317f

System page at phys:20010000 user:fc404000 kern:fc404000
Starting next program at vfe03d838
cpu_startnext: cpu0 -> fe03d838
Welcome to QNX Neutrino 6.4 on the Atmel AT91SAM9261 Board
Starting DBGU driver...
Starting SPI0 driver...
Starting SPI1 driver...
Starting USB driver...
starting Input Drivers...
Starting Graphics driver...
Starting SD/MMC driver...
#

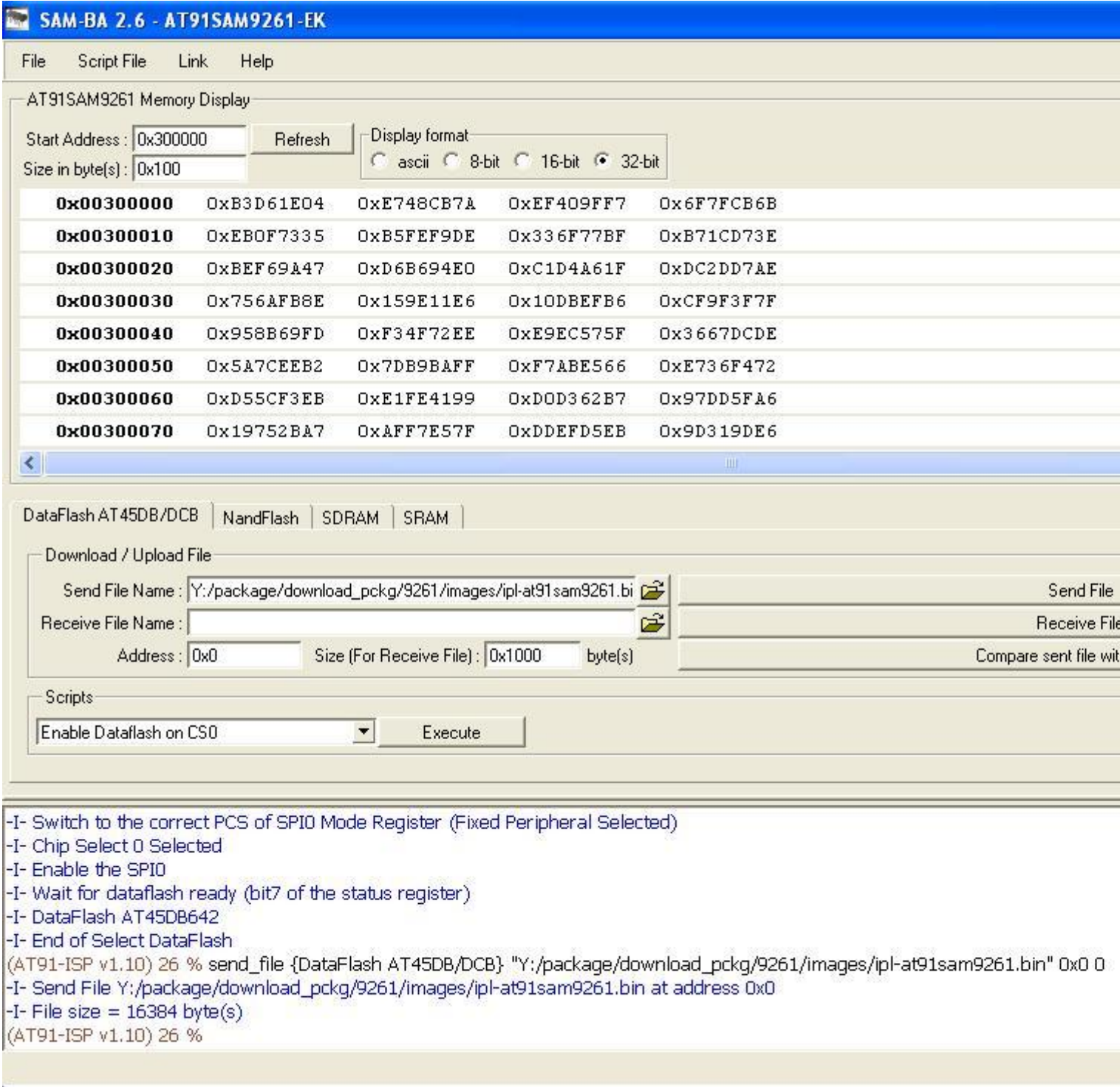
```

You can test the OS simply by executing any shell builtin command or any command residing within the OS image (e.g. ls).

Step 3B: Reprogram the IPL.#

In case if Board is new or IPL gets corrupted, We can reprogram IPL using SAM-BA application.

- Select the Data-Flash AT45DB/DCB tab in SAM-BA application window, . Execute the Enable Data-flash on CS0 script.
- Select the ipl-at91sam9261.bin file to be sent to the target, and then press Send File. It will take a few seconds up to a minute.
- Snapshot is as follows:



Summary of driver commands#

The driver command lines below are specific to the Atmel AT91SAM9261 board. See the online docs for each driver for additional command-line options and other details.

Note: Some of the following drivers are commented out in the default buildfile. To use the drivers in the target hardware, you'll need to uncomment them in your buildfile, rebuild the image, and load the image into the board.

Startup:#

Command:

startup-at91sam9261 -r 0x23dd0000,0x200000,1 -vvvvvvv

Serial:<#>

Command:

```
devc-serdebug -e -F -S -b115200 -c50000000 0xffff200,1
```

Required binaries:

- devc-serdebug

MMC SD:<#>

Command:

```
devb-mmc-sd-at91sam9xx mmc-sd ioport=0xFFFFA8000,irq=9
```

Required binaries and libraries:

- devb-mmc-sd-at91sam9xx
- libcam.so
- cam-disk.so
- io-blk.so
- fs-dos.so
- fs-qnx4.so

SPI:<#>

Command:

```
spi-master -u0 -d at91sam9xx base=0xFFFFC8000,irq=12,clock=50000000
```

```
spi-master -u1 -d at91sam9xx base=0xFFFFC000,irq=13,clock=50000000
```

Required binaries:

- spi-master
- spi-at91sam9xx.so

ETFS NAND flash<#>

Command:

```
fs-etfs-at91sam9xx -D addr=0x40000000,board_id=at91sam9261-ek -m /fs/etfs
```

Required binaries:

- fs-etfs-at91sam9xx
- etfsctl

Note: For more information about these commands, see the Neutrino Utilities Reference.

Graphics<#>

Command:

```
Photon &
waitfor /dev/photon
io-display -dvid=0x0,did=0x0
io-graphics
pwm &
pterm -x10 -y10 -h250 -w200 -t"QNX 6.4.0" -K 03 &
devc-pty &
```

Required binaries:

- devg-at91sam9261.so
- libph.so
- libAp.so
- libphexlib.so
- libphrender.so
- libffb.so
- libdisputil.so
- libimg.so.1
- ttFFcore.so
- PHFcore.so
- FCcore.so
- libFF-T2K.so
- libblkcache.so
- libFF-T2K-fm.so
- libFF-T2K-cache.so
- phfont.so
- libfontutils.so
- libfont.so

Required configuration files:

- /usr/photon/config/at91sam9261.conf=\${PWD}/../src/hardware/devg/at91sam9261/at91sam9261.conf
- /etc/system/config/display.conf=\${PWD}/../src/hardware/devg/at91sam9xx/display.conf

About graphics#

This driver currently supports the AT91SAM9261 integrated LCD controller . It was developed on the Atmel AT91SAM9261 Evaluation Board. This is the GF graphics driver is loaded by io-display.

LCD Displays#

- By default the driver sets up the Hitachi TX09D71VM1CCA TFT with the AT91SAM9261 reference board.

HW Format	QNX Format	Notes
24-bit	24-bit	QNX framework format is RGB888

The LCD controller for the AT91SAM9261 expects colors to be in the format of BGR. The QNX graphics framework specify the colorformat as RGB. The graphics driver is now providing the entry points for the SW rendering to be done in the correct format. The file fbaccess.c implements the s/w rendering functions for rgb888 format.

Reserving Memory / Memory Restrictions#

The Atmel AT91SMA9261 is a UMA system (Unified Memory Architecture). This means there is no dedicated video memory in the system. Surfaces displayed by the LCD controller, and rendered by the CPU, reside in system memory

- To ensure there is enough memory available for graphics, we recommend that memory be reserved at startup by using the -r option to startup.

For example to reserve 2 MB of memory:

```
startup-at91sam9261 -r 0x23dd0000,0x200000,1 -vvvvvvv
```

where 0x23dd0000 is the physical base address of memory, and 0x200000 is the size of memory reserved in bytes.

For a list of options available to the driver please see the at91sam9261.conf file.