

The Bazaar Directory#

This directory contains software provided by the community. Information about these packages and the packages themselves are offered to you on Foundry27 as-is for your convenience; i.e. as provided by community members.

Interested in contributing or in advertising your software? Contact the [QNX Community Management Group](#).

QNX Neutrino Downloads#

Software running on the QNX Neutrino operating system.

Category	Name	Description	Version	License	Supplier	Download
Boot	f32qldr	FAT32 QNX loader	1.0.1	Apache II	Dennis Kelly	SRC+BIN
Boot	qnxldsys	DOS Device Driver to load QNX	1.0.0	Apache II	QNX	SRC+BIN
Boot	pxqldr	PXE QNX loader	1.0.0	Apache II	QNX	SRC+BIN
Data Mgmt	Raima Database Manager (RDM) Embedded	Database management system that provides data storage, data retrieval and data manipulation capabilities for an embedded or real-time application	latest	custom	Birdstep Technology	SDK
Data Mgmt	Raima Database Manager (RDM) Mobile	Small footprint database specifically designed for use on small devices such as PDAs, mobile phones and embedded computers	latest	custom	Birdstep Technology	SDK
Data Mgmt	Raima Database Manager (RDM) Server	Scaleable client-server system using a combined database model (the network and relational models)	latest	custom	Birdstep Technology	SDK

Disk Mgmt	q4img	Sector-based backup/restore for QNX4-file systems	1.0.0	GPL 2.0	Dennis Kelly	SRC+BIN
Java	JamaicaVM	Full featured implementation of J2SE for real-time and embedded systems	V3.0	custom	aicas	BIN
Java	Perc Ultra	The Java Virtual Machine that provides high performance, compiled environments supporting execution of Java platform applications on QNX.	latest	obtained by request	Aonix	PERC ultra
Office	QNX port of Mozilla Sunbird	Calendar management	0.7pre	Mozilla Foundation EULA	Crank Software Inc.	BIN
Office	QNX port of Mozilla Thunderbird	E-mail Client	2.0	Mozilla Thunderbird EULA	Crank Software Inc.	BIN
Networking	Barracuda Embedded Web Server demo	Two precompiled servers specifically designed for loading and enabling the development of Lua Server Pages (LSP) applications	latest	custom	RealTime Logic	SDK DEMO
Networking	CyaSSL	SSL/micro-SSL/TLS Client and Server	latest	GPL or Custom	yaSSL	SRC
Networking	ConfD	ConfD is an XML-based software application used to build carrier-grade, on-device network management systems including CLI,	latest	custom	Tail-f Systems	SDK

		Web, SNMP, and NETCONF interfaces				
Networking	lrzsz	Communication package providing the XMODEM, YMODEM and ZMODEM protocols	0.12.20	GPL 2.0	QNX	SRC BIN
Networking	Mocana Certificate Management	Simple Certificate Enrollment Protocol (SCEP)	latest	custom	mocana corporation	SDK
Networking	Mocana EAP	Framework and Transport Mechanism for AAA protocols	latest	custom	mocana corporation	SDK
Networking	Mocana IPSec/IKE/IKEv2	Security Protocols	latest	custom	mocana corporation	SDK
Networking	Mocana Radius Client	Radius Client	latest	custom	mocana corporation	SDK
Networking	Mocana SSL/TLS Server	SSL/TLS Server	latest	custom	mocana corporation	SDK
Networking	Mocana SSH Client	SSH Client	latest	custom	mocana corporation	SDK
Networking	Mocana SSH Server	SSH Server	latest	custom	mocana corporation	SDK
Networking	QNX port of Asterisk	Open Source IP PBX	1.4.2	GPL 2.0	Digium	SRC
Networking	QNX port of Mozilla Firefox	Web browser	2.0	Mozilla Firefox EULA	Crank Software Inc.	BIN
Networking	SNMPv3 Agent x86 SDK Binary Library	For QNX Neutrino 6.3	8.3	custom	NuDesign Technologies	SDK
Networking	Visual MIBBuilder	visual MIB building application in SMIV1 / SMIV2 grammar	4.7	custom	NuDesign Technologies	SDK
Networking	Visual Embedded xAgentBuilder for C++	SNMPv3/ HTTP Agent Source Code and Project File Generation Wizard	7.3	custom	NuDesign Technologies	SDK
Networking	Visual MIBBrowser Pro	SNMPv3 Management Application	7.2	custom	NuDesign Technologies	SDK

Networking	Visual SNMP Traffic Monitor	Capture, custom filtering, decoding, storage and retrieval application	3.2	custom	NuDesign Technologies	SDK
Networking	yaSSL	SSL/TLS Client and Server	latest	GPL or Custom	yaSSL	SRC
Security	TaoCrypt	Cryptography library	latest	GPL or Custom	yaSSL	SRC
Tools	ctags	Generates an index of names found in source and header files	5.2.3	GPL 2.0	QNX	SRC BIN
Tools	qcrash	Helps reading kernel dump	1.0.0	Apache II	Yao Zhao	SRC+BIN
Tools	sysinfo	Gathers system information for trouble shooting purposes	1.0.0	Apache II	QNX	SRC

Hardware Support#

BSPs#

The following are community contributed BSPs:

Board	QNX Neutrino version	Processors	Provider	License(s)	Download
Freescale MPC8379e RDB	6.3.2	MPC8379e	David Bott	QDL and Apache II	SRC+BIN
Freescale MPC8379e RDB	6.4.1	MPC8379e	David Bott	QDL and Apache II	SRC+BIN
ISEE IGEPv2 Platform	6.4.0	OMAP3530	ATS Global	ATS Global experimental	SRC+BIN

For an exhaustive list of BSPs available for Neutrino, see the **BSPs and Drivers** project's [directory](#).

Drivers#

The following are community contributed drivers:

Driver Type	Device Name	Description	Version	Neutrino RTOS Version	CPU Architecture	Provider	License	Download
Audio	SiS 7019	Audio driver for SiS 7019	1.0	6.3.0	ALL	Mike Gorchak	QDL +Apache 2	SRC

VME	io-vme	VME Bus Manager. Includes driver example for VMIO12 VME IO board	Rev.2009.05	503.2 and later	x86	CDB BC	Custom	SRC+BIN
-----	--------	--	-------------	-----------------	-----	------------------------	--------	-------------------------

For a searchable listing of specific drivers available for Neutrino, see the [Hardware Database](#).

Cross-development Tools#

Cross-development tools to target Neutrino.

Name	Description	Version	License	Supplier	Download	
DACHSview	general purpose function block language for the graphical development of real-time control and real-time graphics applications	1.3	Custom	STEINHOFF Automation & Fieldbus Systems	No InterWiki reference defined in properties for Wiki called "http"!	
CH Standard Edition	A free C/C++ interpreter for scripting and shell programming	6.0	Free for commercial use	SoftIntegration, Inc.	http://www.softintegration.com/download/	
Embedded CH	Embedded Ch is an embeddable C/C++ interpreter, you can call C/C++ library from Ch script or call Ch script from C/C++ application. Debug and thread features are supported.	6.0	commercial license required	SoftIntegration, Inc.	http://www.softintegration.com/download/	
Intel C++ Compiler Professional Edition for QNX Neutrino RTOS	The new compiler contains a number of improvements specifically for the Intel(R)	11.0	Intel	Intel	bernth.andersson@intel.com	

	Atom(TM) Processor, Decimal Floating point extensions and bug fixes. In addition the IPP sample code has been improved and now support both Windows and Linux build.				
MapuSoft OS PAL	OS Abstractor and OS Changer products to help developers re-use their embedded software on QNX. MapuSoft also offers porting, integration, support and training services to help developers easily migrate from legacy platforms to the next generation.	latest	custom	Mapusoft	EVAL
QNX SDK for LabView Embedded	This target allows for LabVIEW Embedded to target any supported hardware platform for QNX Neutrino 6.3.	8.2	National Instruments SLA	National Instruments	SRC+BIN
QWin - Development Target	Software solution for QNX development without a real target hardware	latest	custom	IBV - Echtzeit- und Embedded GmbH & Co. KG	http://www.ibv-augsburg.net/en/qwin-dt.html
QWin - Windows	QNX and Windows	latest	custom	IBV - Echtzeit- und Embedded	http://www.ibv-

Extension for QNX	on a single processor			GmbH & Co. KG	augsburg.net/en/qwin.html	
SoftIntegration C++ Graphical Plotting Library	The simplest solution for 2D/3D graphical plotting within the framework of C/C++. Plots can be generated using SIGL for display in a local monitor, through the Web, or saved in a file with a variety of different file formats.	v2.5	Custom	SoftIntegration, Inc.	http://www.softintegration.com/download/	
Virtual High-Speed Application Timer for QNX6	Timer to generate high speed interrupts below the QNX system tick period	latest	custom	IBV - Echtzeit- und Embedded GmbH & Co. KG	http://www.ibv-augsburg.net/en/timer.html	

Data Acquisition#

National Instruments & QNX Measurement-Quality Analog I/O OEM Bundle

Kit Contents	
Genesi EFIKA 5200B Single Board Computer based on the Freescale MPC5200B PPC SOC 400MHz	
NI USB 6009 Data Acquisition Device	
QNX Neutrino and Momentics 60 day Evaluation	
NI LabVIEW Microprocessor SDK 60-day Evaluation	

For more details and to order: [NI Zone](http://www.ni.com) or email partners@qnx.com

QNX Momentics IDE Plug-ins#

The plug-ins below can be installed within the IDE to expand its capabilities.

Category	Name	Description	Supports	License	Supplier	Download
Analysis	Klocwork Developer for Java	Java Code Analysis	IDE 4.x	custom	Klocwork	BIN
SCM	Subclipse	Subversion client	IDE 4.0	EPL 1.0	Tigris	SRC+BIN
SCM	Subversive	Subversion client	IDE 4.0 - included in	EPL 1.0	eclipse.org	SRC+BIN

			IDE 4.5 and later			
Editor	viPlugin for Eclipse	Replacement code editor with vi like behavior	IDE 4.x	For purchase with free trial	satokar.com	SRC+BIN
Editor	Eclipse Hex Editor Plugin	Hex editor for any file type	IDE 4.x	GPL	SourceForge.net	SRC+BIN
Editor	Columns 4 Eclipse	Column functionality for editors in Eclipse	IDE 4.x	EPL	Sourceforge.net	SRC+BIN

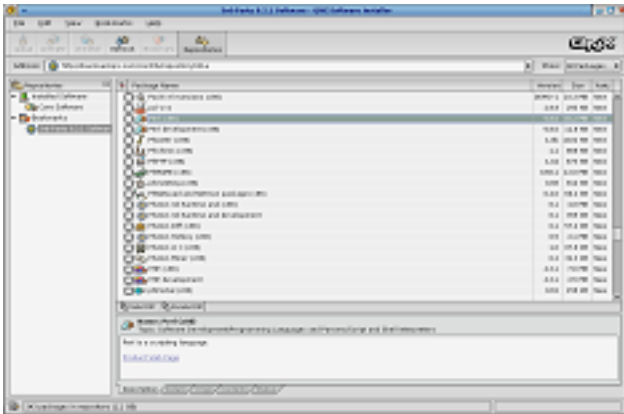
Lots of other useful add-on plug-ins can be found on the [Eclipse Plugin Central](#) web site

pkgsrc#

'pkgsrc' is a framework for building third-party software and managing the resulting packages. Originally developed on NetBSD, pkgsrc has evolved according to [NetBSD](#)'s principle of portability and currently supports 13 different platforms (hopefully QNX will be number 14). Over 6400 packages are in the base distribution. The [QNX Community pkgsrc project](#) was created to act as a stepping point to have QNX included as a supported platform in pkgsrc.

QNX Installer Packages#

The QNX Software Installer (qnxinstaller) that is included with Neutrino can install packages from a local or from a remote repository. Point to the QNX Self-Hosted Software Repository located at <http://download.qnx.com/contrib/repository621a> and find over **600 software packages ported over QNX!**



[Enlarge](#)